

# Reachlight Optoelectronic Limited

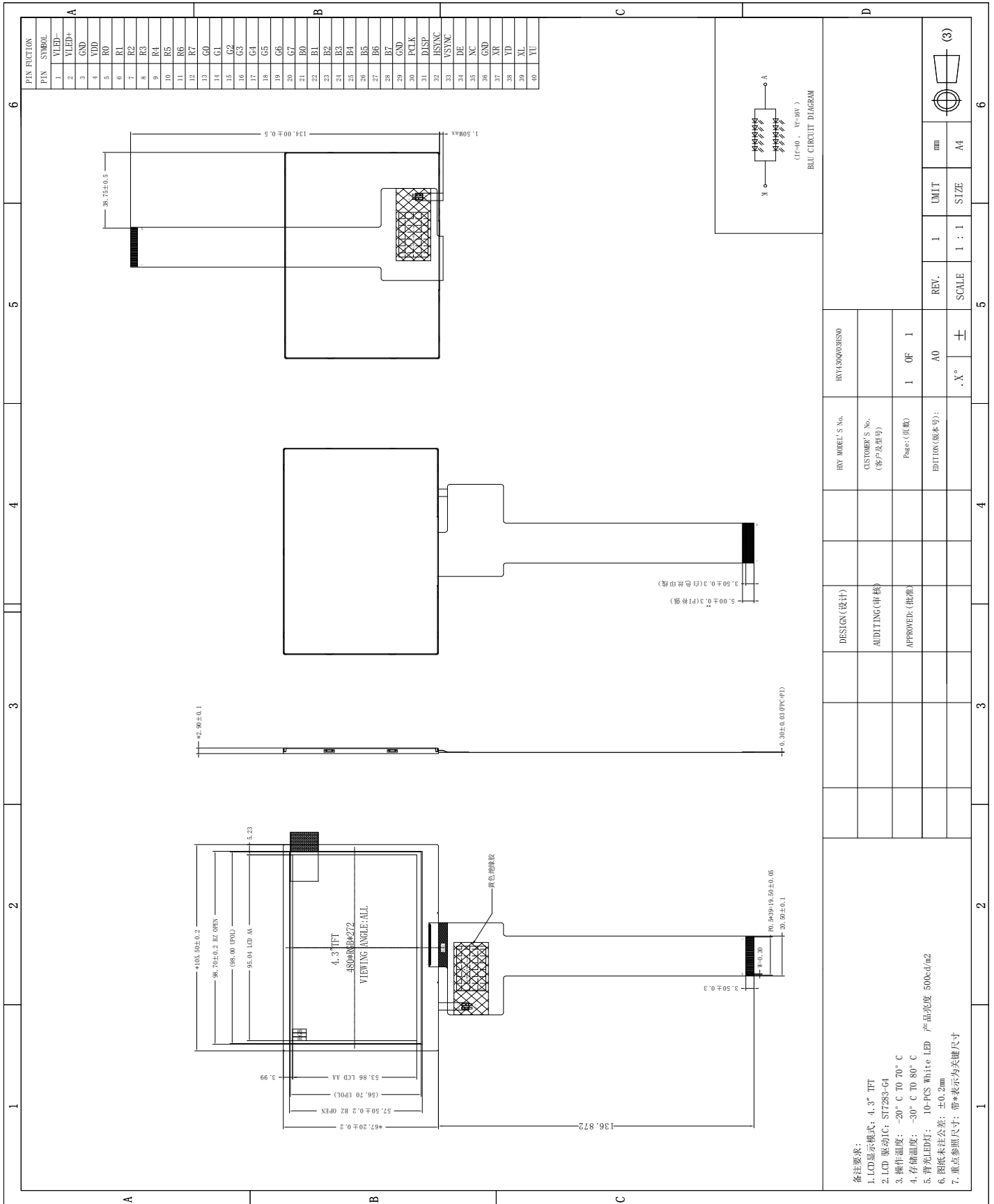
## 1. General Specifications

*The 4.3inch is a TFT-LCD module. It is composed of a TFT-LCD panel, driver IC, FPC, a back light unit. This display area contains 480\*272 pixels and can display up to 16.7M colors. This product accords with ROHS environmental criterion.*

Item	Contents	Unit	Note
LCD Type	TFT	-	
Display color	16.7M		
Viewing Direction	ALL	O'Clock	
Operating temperature	-20~+70	°C	
Storage temperature	-30~+80	°C	
Module size	105.5×67.2×2.9	mm	
Active Area(W×H)	95.04×53.86	mm	
Number of Dots	480×272	dots	
Display Controller	ST7283-G4	-	
Power Supply Voltage	2.8	V	
Backlight	10	pcs	
Display Interface	RGB	-	

# EXTERNAL DIMENSIONS

## 外形尺寸



# Reachlight Optoelectronic Limited

## 3. Optical Characteristics

Item	Symbol	Condition	Min.	Typ.	Ma x.	Unit	Note
Brightness	Bp	$\theta=0^\circ$ $\Phi=0^\circ$	-	500	-	Cd/m <sup>2</sup>	
Uniformity	$\Delta$ Bp		-	-	-	%	
Viewing Angle	3:00	Cr $\geq$ 10	70	80	-	Deg	
	6:00		70	80	-		
	9:00		70	80	-		
	12:00		70	80	-		
Contrast Ratio	Cr	$\theta=0^\circ$ $\Phi=0^\circ$	640	800	-	-	
Response Time	T <sub>r</sub> +T <sub>f</sub>		-	30	40	ms ms	
Color of CIE Coordinate	W	x	$\theta=0^\circ$ $\Phi=0^\circ$	Typ- 0.03	0.320	Typ+0.0 3	-
		y			0.345		-
	R	x			0.629		-
		y			0.326		-
	G	x			0.337		-
		y			0.546		-
	B	x			0.136		-
		y			0.143		-
NTSC Ratio	S	-	-	-	%		

Note : The parameter is slightly changed by temperature, driving voltage and materiel