

Reachlight Optoelectronic Limited

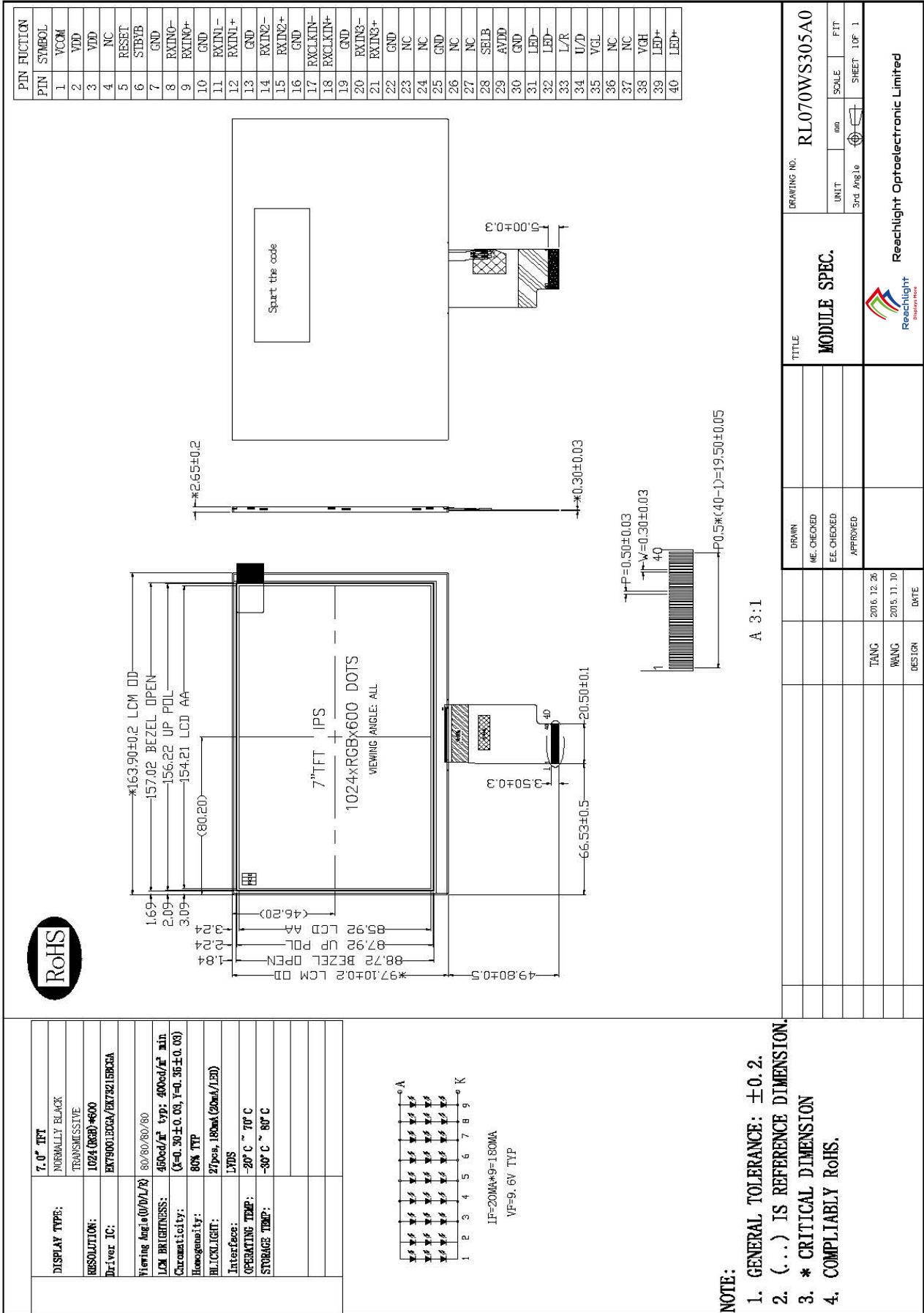
1. General Specifications

RL070WS305A0 is a TFT-LCD module. It is composed of a TFT-LCD panel, driver IC, FPC, a back light unit. The 7.0' display area contains 1024x600 pixels and can display up to 16M colors. This product accords with RoHS environmental criterion.

Item	Contents	Unit	Note
LCD Type	TFT	-	
Display color	16.7M		
Viewing Direction	ALL	O'Clock	
Operating temperature	-20~+70	°C	
Storage temperature	-30~+80	°C	
Module size	Refer to outline drawing	mm	
Active Area(W×H)	154.21×85.92	mm	
Number of Dots	1024×600	dots	
Controller	EK79001ECGA/EK73215BC GA	-	
Power Supply Voltage	3.3	V	
Outline Dimensions	Refer to outline drawing	-	
Backlight	27-LEDs (white)	pcs	
Weight	95	g	
Interface	LVDS	-	

Reachlight Optoelectronic Limited

2. Outline Drawing



Reachlight Optoelectronic Limited

3. Optical Characteristics

Item	Symbol	Condition	Min.	Typ.	Max.	Unit	Note
Brightness	Bp	$\theta=0^\circ$	400	450	-	Cd/m ²	
Uniformity	Δ Bp	$\Phi=0^\circ$	75	80	-	%	
Viewing Angle	3:00	Cr \geq 10	80	85	-	Deg	
	6:00		80	85	-		
	9:00		80	85	-		
	12:00		80	85	-		
Contrast Ratio	Cr	$\theta=0^\circ$ $\Phi=0^\circ$	600	800	-	-	
Response Time	T _r +T _f			25	40	ms	
Color of CIE Coordinate	W	x	-0.03	0.30	+0.03	-	
		y		0.35		-	
	R	x		0.632		-	
		y		0.311		-	
	G	x		0.297		-	
		y		0.536		-	
	B	x		0.140		-	
		y		0.154		-	
NTSC Ratio	S		45	50	-	%	

Note 1: The parameter is slightly changed by temperature, driving voltage and materiel

Note 2: The data are measured after LEDs are turned on for 5 minutes. LCM displays full white. The brightness is the average value of 9 measured spots. Measurement equipment PR-705 (Φ 8mm)

Measuring condition:

- Measuring surroundings: Dark room.
- Measuring temperature: Ta=25°C.
- Adjust operating voltage to get optimum contrast at the center of the display